

That the wow factor

HOME
ACCENTS
TODAY

WHERE
HOME
COMES
TOGETHER

VOL 39 | NO 1

January
2024

PRODUCTS AND PRACTICES FOR THE NEW YEAR



WINTER FASHION REPORT • JANUARY MARKET PREVIEW

Winter Market Guide

Markets in Dallas, Atlanta and Las Vegas this month promise a few familiar themes – including lots of curves and a focus on natural elements – as well as a sprinkling of unexpected new looks. Consider this part of your sourcing guide for the new year.

WINTER market guide

BLUE OCEAN TRADERS

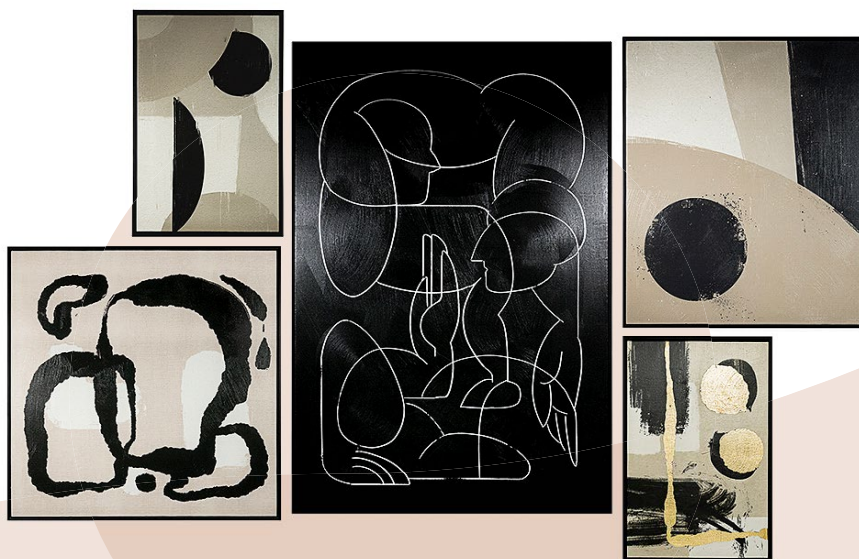
The Bamileke Mask set from Blue Ocean Traders is handcrafted from carved wood and features an array of artistic designs.
Atlanta, Las Vegas

Winter Market Guide



SUNPAN

This 5-piece collection of artwork printed on canvas from Sunpan includes smooth, character-defining lines, abstract shapes and brushstrokes. *Las Vegas*



HAMMERTON STUDIO

Hammerton Studio's Vessel sconce diffuses light through a latticed texture of interlocking hexagons. *Dallas Lightovation*



SURYA

The Aqua Bliss table lamp from Surya features an antiqued base with brass details and a linen shade. *Dallas*



M BY HOOKER FURNISHINGS

The Raine Chair by M, a brand from Hooker Furnishings, offers a nod to the 1920's Tuxedo arm silhouette with the arms and back at the same height, accentuated with tailored welting. *Atlanta, Las Vegas*

DOVETAIL FURNITURE

The Paulette Coffee Table from Dovetail Furniture showcases the beauty of maple burl wood with curved lines and gracefully arched legs. *Las Vegas*



Winter Market Guide



WAC LIGHTING

Minx pendants from the Modern Forms division of WAC Lighting offer a modern take on crystal design. *Dallas Lightovation*

CASE & CANVAS

Case & Canvas' Bowie Club Chair blends midcentury elegance and modern comfort with an exposed oak-finished wood base that complements the performance bouclé upholstery. *Atlanta, Las Vegas*

D.V. KAP HOME

D.V. Kap Home's Prato pillow features an embroidered tree pattern on cotton in a palette of vibrant colors. *Atlanta, Las Vegas*

DANICA HEIRLOOM

A quiet cluster of branches define this 8-inch Danica Heirloom bowl. *Atlanta, Las Vegas*



Winter Market Guide

HUBBARDTON FORGE

The Volterra circular pendant from Hubbardton Forge. *Dallas Lightovation*



BRAXTON CULLER

Braxton Culler's Leighton Swivel Chair features a 'memory swivel' feature which enables the chair to return into its original position. Leighton also features high resilience foam seating and a removable reversible seat and back cushions. *Atlanta*



PACIFIC COAST LIGHTING

The Marigold Lamp from Pacific Coast Lighting has a champagne and polished brass finish, a glass and metal body and a white linen shade. *Las Vegas*



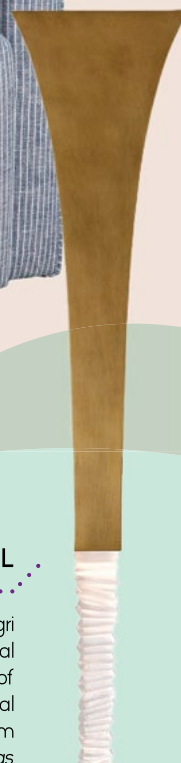
PARK HILL COLLECTION

Square heirloom serving pedestals from Park Hill Collection add height and visual interest to the buffet. *Atlanta, Las Vegas*



ALLEGRI CRYSTAL

The Roman Collection from Allegri Crystal is inspired by classic musical instruments, with a body made of solid brass and a large solid crystal which breaks the light at the bottom part of the fixture. *Las Vegas*



Winter Market Guide



WAC LIGHTING

Solo, from dweLED by WAC Lighting offers a stunning twist on the infinity loop. *Dallas Lightovation*

ALLSTATE FLORAL

This 12-inch spruce/pinecone display from Allstate Floral is shown in a terracotta pot. *Dallas, Atlanta*



HUDSON VALLEY LIGHTING GROUP

A refined interpretation of a vintage box lantern scone, Santa Clara from the Hudson Valley Lighting Group has flanges that extend from the backplate to support the minimal glass box-like jewelry clasps. Available in two sizes. *Las Vegas*

CLOUD9

The Safara Panther pillow from Cloud9 is embellished with gold beads and threading, which adds a touch of opulence and sophistication. *Atlanta, Las Vegas*



Winter Market Guide



PROGRESS LIGHTING

The Quillan Vanity Collection from Progress Lighting has a distinctive designer touch and includes scalloped elements, clear, elliptical glass shades and matching and contrasting golden accent rings. *Dallas Lightovation*

FOUR HANDS

Four Hands offers a new take on the classic club chair with Daria, which offers sleek lines, double top-stitching and subtle piping throughout. Its carbon-neutral, vegetable-tanned leather is processed using eucalyptus leaves in Uruguay. *Las Vegas*



LEFTBANK ART

Leftbank Art is offering this abstract print created through a collaboration with interior designer Kate Markor. *Atlanta, Las Vegas*



NAPA HOME AND GARDEN

These family baskets from Napa Home and Garden come in a set of three and are graywashed and made from rattan in Burma. *Dallas, Atlanta, Las Vegas*

POM POM AT HOME

Rutherford napkins from Pom Pom at Home have a finished edge and contrasting, stitched stripes running the length of them. *Atlanta, Las Vegas*



Winter Market Guide



BASSETT MIRROR

The Mission Table Lamp from Bassett Mirror is crafted of metal with a drum shade, while the Clever Wall Mirror features natural cream-colored bone with brass accents. *Atlanta*

HOWARD ELLIOTT

The Kenmare bench from Howard Elliott includes a soft, supple upholstered seat with a curved iron base. *Las Vegas*



CARMEL CERAMICA

Earthy tones of brown, white and cream mix in the stoneware Truffle pitcher from Carmel Ceramica. *Atlanta, Las Vegas*



Winter Market Guide

CURREY & COMPANY

The bell-shaped Pendulum Pendant from Currey & Company features varying shapes and sizes of wooden beads, strung in tandem. *Dallas Lightovation, Atlanta, Las Vegas*



MITZI LIGHTING

Inspired by a crystal ball, the Cleo sconce from Mitzi Lighting is handcrafted from glass and supported by a cantilever in a warm aged brass finish. A second shade crafted from Opal Glass rests inside, creating a layered diffusion of light. *Dallas Lightovation*



SURYA

The Trumpet Swivel Chair from Surya features velvet upholstery, a classic, timeless shape, and is available in three fabrics. *Dallas*



NORWALK FURNITURE

While simple in its shape, the Castle Ottoman from Norwalk Furniture has a swivel base and shows off its modified Greek Key nail trim. *Dallas, Atlanta, Las Vegas*



ANNIEGLASS INC.

The Poppy Charger from Annieglass Inc. is made of frosted glass with 24k gold trim and a 15-inch diameter. *Atlanta*



Winter Market Guide



LR HOME

The Bird Chair from LR Home is made of 100% mango wood and 100% cotton upholstery. *Atlanta*



TRANS OCEAN IMPORT COMPANY

The Capri on Holiday Aqua Rug from Trans Ocean Import Company boasts vibrant colors. *Atlanta, Las Vegas*



ART FLORAL TRADING

The abstract form and textured surfaces of these handcrafted ceramic vases from Art Floral Trading were inspired by the ocean's hidden treasures. *Atlanta, Las Vegas*

OLIVIA RIEGEL

The Dogwood cake plateau from Olivia Riegel showcases delicate dogwood blossoms richly cast in gold finished pewter with hand-enameling and hand-set crystals. *Dallas, Atlanta, Las Vegas.*



Winter Market Guide

GLOBAL VIEWS

The Aura chandelier from Global Views is finished in shiny brass and glass. *Dallas Lightovation*



STREAMLINE ART

The Sunset Serenity painting from Streamline Art is a hand-embellished canvas piece that is wrapped around pine stretcher bars. *Las Vegas*



FOUR HANDS

The It Takes an Hour sideboard from Four Hands (in partnership with Van Thiel) is influenced by a Scandinavian antique. The grand-scale cabinet features drawers and wine storage behind panel glass doors. *Las Vegas*



ZUO MODERN

Zuo Modern's Busan Side Table's sleek and minimalistic design is crafted from black painted steel. The table's versatile and sturdy design allows it to fit seamlessly into any space. *Atlanta, Las Vegas*



KALCO LIGHTING

Taking inspiration from the jewelry chains of layered necklaces, Strati Esterno, from designer Takayuki Ishii of Kalco Lighting, uses different sizes of crystal to create a unique mesh look. *Las Vegas*



Winter Market Guide



VARALUZ

Varaluz's Ethereal Rose Mirror is inspired by a drawing that appeared in the Japanese design magazine, *Shin-Bijutsukai* and marries swirling lines of varying thicknesses and irregular curves with a mid-century metal work technique. *Dallas, Atlanta, Las Vegas*

CREATIVE CO-OP

This metal and acrylic display case/terrarium from Creative Co-op has a square shape with four acrylic panels that can show the contents from all angles and a hinged lid that opens and closes easily, allowing access and arranging items inside. *Atlanta, Las Vegas*



MOSS HOME

The Gus Ottoman from Moss Home is shown in the Fargo Oatmeal colorway with a round leather shape and a sleek plinth base. *Dallas, Atlanta, Las Vegas*

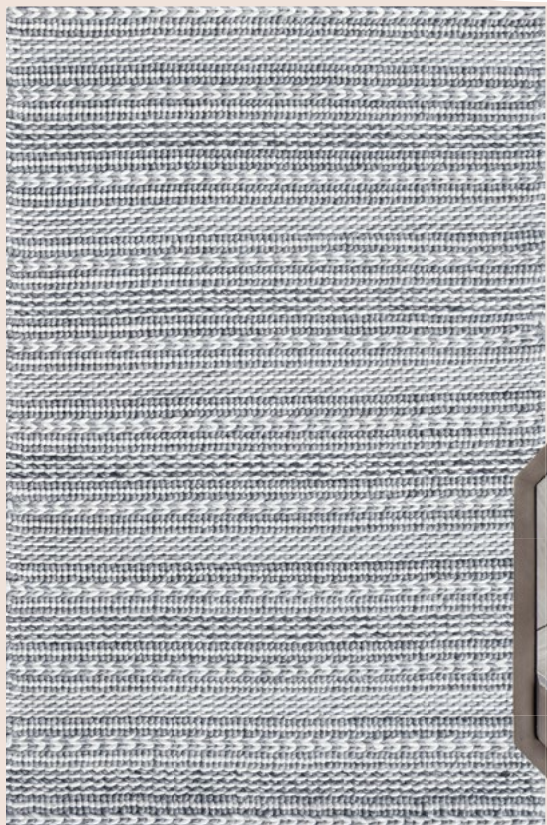
CHARLESTON FORGE

The steel and glass Armory End Table from Charleston Forge celebrates artisans of the past by making historically inspired, heirloom-worthy products. *Las Vegas*

Winter Market Guide

ARTMAX

The FM mirror from Artmax is 40" x 50" and the coordinating S cabinet is 68" x 16" x 34". *Las Vegas*



KAS RUGS

The Cortico Rug Collection from Kas Rugs includes soft and knobby weave rugs handwoven of 100% New Zealand wool. *Las Vegas*



GLOBAL VIEWS

The Casita Cocktail Table by Ashley Childers for Global Views combines the beauty of natural oak with modern, organic shapes. The lower level of this table pivots 360 degrees to create various configurations. *Atlanta, Las Vegas*



KALALOU

This set of three stacking topiaries from Kalalou is made from seagrass and iron. *Atlanta, Las Vegas*



Winter Market Guide



SPI HOME AND GARDEN

The Heron Flock accent table from Spi Home and Garden can be used indoors or out and features a majestic heron nestled among cattails and shoreline plants. *Atlanta, Las Vegas*



STUDIO A HOME

Studio A Home's Wander Rug is handcrafted from a blend of viscose and wool and boasts a digitally printed path design of twists and turns. Two colorways available: cream/charcoal and cream/tan. *Dallas, Atlanta, Las Vegas*

PULASKI FURNITURE

The Ashby Place Server from Pulaski Furniture is crafted from quartered ash in a gray finish complemented by silver-tone metal details. *Atlanta, Las Vegas*



PHILLIPS COLLECTION

The Chess Sculpture in Black from the Phillips Collection is made with artisan-grade resin and crushed stone and includes several life-sized chessboard sculptures. *Las Vegas*



BE HOME

Be Home designs include ethically sourced home goods from around the world. *Ivystone showroom, Dallas, Atlanta, Las Vegas*



Winter Market Guide

KALATY

The Elara Collection from Kalaty includes high-fashion tonal colors with erased effects in this hand-knotted Tibetan-weave rug. *Las Vegas*



AHS LIGHTING AND HOME DÉCOR

The Mini Danbury Black accent lamp from AHS Lighting and Home Décor features a slightly distressed finish with a natural cotton fabric lamp shade. *Atlanta*



WHITTIER WOOD FURNITURE

The Sheepskin Armchair from Whittier Wood Furniture has a classic style with premium sheepskin that adds warmth and beauty. *Las Vegas*

HES TRADE

The Nirvana clay pitcher from Hes Trade is crafted from Anatolian Cappadocia clay that keeps water cool. *Atlanta*



Winter Market Guide

ORIENTAL WEAVERS

Oriental Weavers' Fiji Collection features beautiful watercolor botanicals and vibrantly colored coastal motifs and is made from easy-care woven polyester. *Las Vegas*

TORRE & TAGUS

The Adele Gold Base Green Glass Cylinder Vase from Torre & Tagus includes ribbed textured glass and a gold metal base which blends modern and contemporary design elements. *Las Vegas*

KEVIN O'BRIEN STUDIO

This paprika-colored pillow from Kevin O'Brien Studio is made from silk and rayon velvet with two sets of interconnected shapes in a steps pattern. *Dallas, Atlanta, Las Vegas*

VIETRI

Vietri's Pietra Serena bowls pay tribute to the architectural details of Florence during the Renaissance. *Atlanta, Las Vegas*